



GRO
Green Roof Outfitters®

AMENITY DECK & HARDSCAPE PRODUCTS



WHO WE ARE

GRO is a total **amenity deck product provider**, servicing all of the U.S. and Canada. We started out over a decade ago from the humble beginnings of a modular green roof system manufacturer, and through expanding opportuni-

ties and great customer relationships, we have grown into what we are today...and ever evolving! In addition to product offerings, we can also provide **Turnkey Installation** services.

WHAT MAKES GREEN ROOF OUTFITTERS AWESOME?

GRO products are built on the foundation of superior function at a reasonable price. We either manufacture our own products, import directly from the source, or have strategic partnerships with other manufacturers, so we retain control over quality and cost.

Our team has a lifetime of experience with everything from the front end manufacturing & supply chain, to consultation & proposals, to the back end installation & project management. We've been there and done that...we've made all of the

mistakes upfront, so you don't have to.

Our systems are designed to be simple and easy to install, but if you still have questions or need help, we have installation guides and can walk you through the installation process for each product.

GRO SERVICES

PRODUCT SALES

ESTIMATING & PLAN TAKE OFFS

STORMWATER RETENTION CONSULTATION

TURNKEY INSTALLATION

AMENITY DECK PRODUCT CONSULTATION

PARTNERSHIP OPPORTUNITIES





PLANTERS

Available in Fiberglass or Aluminum, and in all sizes and colors. Planter boxes are great for adding style and areas of interest to a rooftop patio, deck, and/or green roof. They can be planted with tall plants, shrubs, trees, or even edibles, to create natural screens or to just add visual interest to a rooftop space.



PRE-GROWN SEDUM MATS/TILES

Pre-grown Sedum Mats/Tiles are the most efficient and effective way to plant a green roof. Mats/Tiles are cultivated like sod and placed over growth media.

Perfect for our GROWVista modular green roof systems, or for our layered system green roofs.

EDGE TREATMENT

For use with the GROWVista Modular System or with our layered green roof systems. While not required with GROWVista, edge treatment offers a more finished look. Edge treatments can accommodate curves and angles in the design.



BULK ENGINEERED GREEN ROOF SOIL

We offer engineered green roof soil media in bulk for our GROWVista Custom Hybrid Method of planting, or for use on our layered system green roofs. Our bulk soil media is available in a light-weight extensive blend and a heavier intensive blend. This media can be delivered in both bulk or super sacks.

GREEN ROOF SYSTEMS



The GROWVista modular green roof system is the next generation of modular systems. ALWAYS EVOLVING....it's features are based on continuous feedback & updates from code officials, stormwater regulations, designers and installers across North America.

The design combines total stormwater control with cost effective installation. Features include: built-in reservoirs, irrigation channels, inset handles, root-aeration vents, corner extensions for no soil-loss gaps, and sidewall gussets for added strength.



GROWVISTA 2-LITE

This ultra lightweight system incorporates a special engineered soil blend with aerated components, to meet the weight-sensitive project needs, while still fulfilling needed plant nutritional requirements.

4" Depth | 3.5" Soil | 20 psf Sat. Weight | 1.1 gal/sq H₂O Ret.

GROWVISTA 2

The most compatible solution for a balance of weight, cost, stormwater retention, ease of installation and extensive plant natural habitat. This is the 'go to' system.

4" Depth | 4" Soil | 23-28 psf Sat. Weight | 1.3 gal/sq H₂O Ret.

GROWVISTA 2X-6 & 2X-8

Deeper systems allow for more options, like greater stormwater retention, larger plant selections, edibles, and a more lush aesthetic.

6"-8" Depth | 6"-8" Soil | 35-55 psf Sat. Weight | 1.9-2.6 gal/sq H₂O Ret.

* H₂O Ret. numbers above are based on total system retention, including estimated retention by vegetation.



GRO FEATHERWEIGHT

The GRO Featherweight system is a novel solution for projects that have weight constraints or value-engineered (VE) budgets. The engineered soil composition is slightly higher in organic additives than typical extensive systems, to allow a sufficient nutrient base in a thin profile. Irrigation is highly recommended for this system, to sustain unforeseen drought conditions.

2.5" Depth | 2" Soil | 17 psf Sat. Weight | 0.6 gal/sq H₂O Ret.



GRO 2+1

The GRO 2+1 is the perfect balance of maximum water retention within a lower-weight system. This synergy of engineered soil and premium rock wool, allows the system to work in harmony and provide the vegetation with needed nutrients and aeration, while retaining as much stormwater as a standard 4" deep system.

3.5" Depth | 2" Soil | 25 psf Sat. Weight | 1.3 gal/sq H₂O Ret.



GRO CLASSIC

The GRO Classic is the 'tried & true' workhorse of the green roof industry. This standard composition has been proven for many years, and will continue to be specified. Our GRO Classic system meets the minimum stormwater retention requirements for most U.S. cities.

4.5" Depth | 4" Soil | 33 psf Sat. Weight | 1.3 gal/sq H₂O Ret.



OPTIONAL
XL LAYER

GRO WATERHOG & WATERHOG XL

The GRO WaterHog & WaterHog XL are high-performance systems are the premium systems for stormwater management. The GRO WaterHog has the infrastructure of the Classic system, with the addition of a high-retention drainage mat, that adds almost 25% more retention than the Classic. The GRO WaterHog XL is the standard WaterHog system with an additional 1" layer of premium rock wool, which increases the retention capacity to over 50% above the Classic!

5" Depth | 4" Soil | 37 psf Sat. Weight | 1.7 gal/sq H₂O Ret.

^{XL} 6" Depth | 4" Soil | 43 psf Sat. Weight | 2.3 gal/sq H₂O Ret.

* H₂O Ret. numbers above are based on total system retention, including estimated retention by vegetation.



GREEN WALL SYSTEM

Green Walls, or Living Walls, can reduce energy needs for heating and cooling through natural cooling effects, and can filter air by removing harmful pollutants. Green Walls also add a natural look to man-made surfaces.

Our GROWall system can be used to achieve any Green Wall goal. The system can be free

standing or wall mounted and can be used for outdoor or indoor applications. Creative designs can be incorporated with plant colors and patterns.

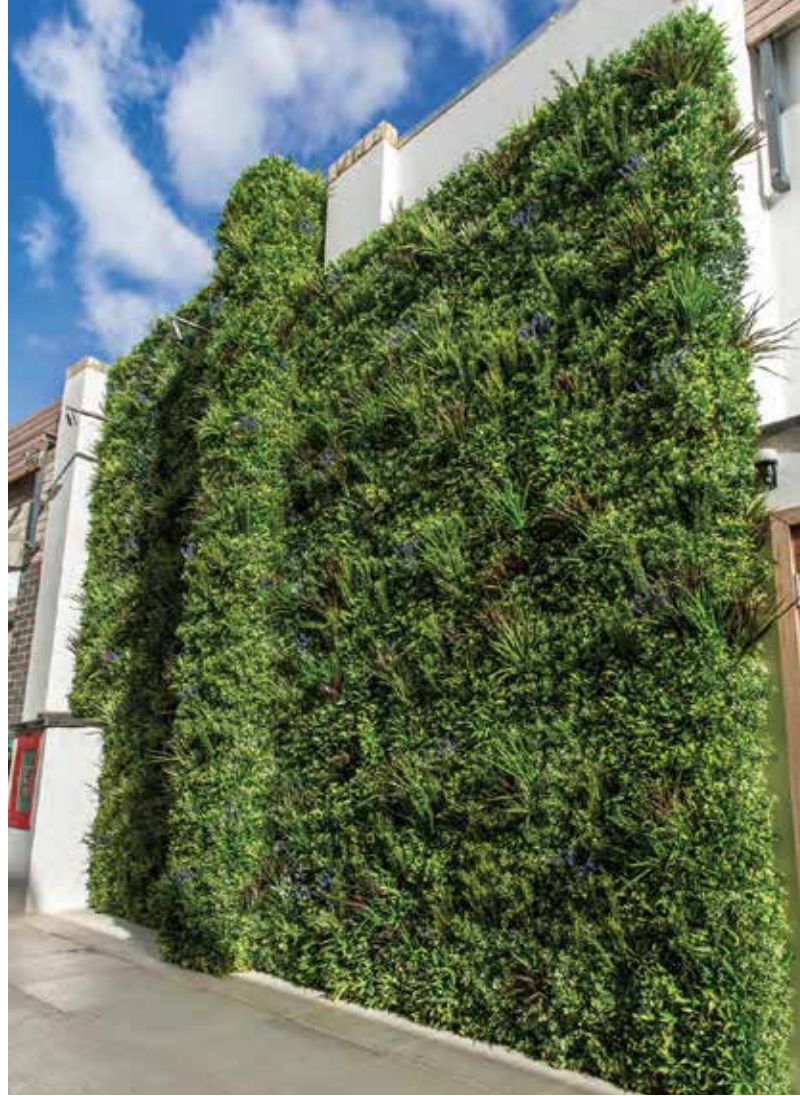
Our team can consult with you to choose which of our living plant systems will work best for your application and budget.



ARTIFICIAL GREEN WALL SYSTEM

This is the highest-quality realistic green wall system on the market! Designed by horticulturists to give a totally random effect, that mimics the look of natural foliage. Panels are easy to connect and install, for a seamless look with NO MAINTENANCE.

UV stable & fire rated options available.



GRO FENCE

GROFence is a pre-grown green screen that is a simple solution for: privacy, noise-cancellation, or blocking unsightly views or walls.

This can also be accompanied by our aluminum planters with built-in frames.

HEIGHT OPTIONS



4' X 4'

4' X 6'

4' X 8'



STRUCTURAL DECK TILES & PAVERS

Deck paver systems add level walkable areas to roof surfaces. They can be used to create usable patio or terrace space, or walking paths. Deck pavers installed on pedestals can be used to hide and protect roof penetra-

tions, pipes, duct work and mechanicals. We offer rooftop pavers in a variety of materials including wood (ipe & FSC itauba), concrete, and porcelain. These are available in many sizes and colors.



HARDWOOD DECK TILES

South American hardwoods are exceptionally durable, rot & insect resistant, and retain their stability across a broad temperature range. Our deck tile standard sizes are 2'x2', 2'x4' & 2'x6', with custom sizes available. When accompanied with our pedestals, our tiles have a lock-down feature to assist with wind uplift and movement.



CONCRETE PAVERS

Concrete pavers are known for their lasting nature, heavy stability and economical pricepoint for decks and terraces. They are available in many colors and finishes. Standard sizes are 1'x2' and 2'x2', with custom sizes also available. MADE IN THE USA.



PORCELAIN PAVERS

The sky is the limit with the aesthetic range of colors and textures of our porcelain pavers! They are stain proof, slip resistant, chemical resistant, fade resistant, and a no maintenance product. Standard sizes are 1'x2' and 2'x2' & 2'x4', with many custom sizes available. MADE IN THE USA.





PEDASTALS

Our pedestals work perfectly with all deck pavers, including wood, porcelain and concrete. Our self-leveling head pedestals enable massive slope correction of any pedestal on the market, and can hold thousands of pounds. The self-leveling head

can cut installation time almost in half on sloped roofs! The pedestals help conceal roof extrusions, like anchor points and pipes. These pedestals allow our fastening kit to secure wood and porcelain pavers down to mitigate movement and wind uplift.

DECK PAVER HEAD

Design specifically to hold and align deck pavers. Available with self-leveling head.

ADJUSTABLE THREADED SECTION

This heavy grade threaded section allows you to adjust the height in minute increments, within the given range. It's easy to adjust, simply grab and twist.

HEIGHT EXTENSION COLLAR

A stable solution to add quick height to pedestals for increased time efficiency.

WIDE SUPPORTING BASE

Pedestals are loose and do not require fixing to the floor. Large diameter spreads loads and ensures stability.



GRO THIRSTYPAVE

ThirstyPave is a line of ceramic-based pervious pavers that actually absorb water! These pavers are fully penetrable and allow rain water to pass both through and around them at a rate of 2 in./min. Because these are pervious pavers, they do not require large gaps between pavers to maintain permeability.

AVAILABLE SIZES

ThirstyPave pavers are available in many sizes: 4'x8', 8'x8', 6'x12', 12'x12', and 12'x24

MULTIPLE THICKNESSES

All paver sizes are available in three different thicknesses: 1 3/16", 2", and 2 3/16"

COLOR OPTIONS

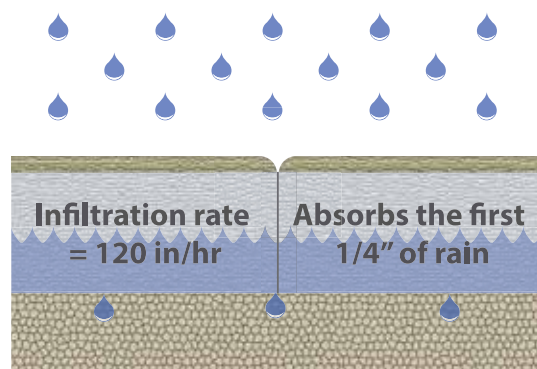
There are several standard color options available including white, gray, black, red, brown, and sand.

ASTM TESTED

ASTM C1781 (Infiltration), ASTM C666 (Freeze/Thaw), ASTM C67 (Compression), ASTM C99 (Rupture Strength)

GRO IPE BLOCKPAVE

GRO Ipe BlockPave is a permeable proprietary paver system that is both functional and stunning. A great BMP for stormwater reduction, by allowing massive volumes of water to dissipate through it, and recharge back into the earth below. The pre-assembled system is engineered from a mix of naturally rot/ insect resistant South American hardwoods. The 3" x 3" blocks are attached to a stable backing that anchors them in place, and makes for easy installation. Can be cut on-site to fit curves and custom angles.



CONTACT US

info@GreenRoofOutfitters.com
1445-A Greenleaf Rd, Charleston, SC 29405
www.GreenRoofOutfitters.com
843-364-7653

